

Floor Plans of DLF : Express Greens, Gurgaon



TENTATIVE PLAN OF APARTMENT NO. 1, 2 & 4 IN BLOCK E & G
 TENTATIVE PLAN OF APARTMENT NO. 1, 3 & 4 IN BLOCK F
 TENTATIVE PLAN OF APARTMENT NO. 1 IN BLOCK A, B, C & D

NOTE: PLAN NOT TO SCALE

 **DLF NEW GURGAON HOMES DEVELOPERS PVT.LTD**

Project
EXPRESS GREENS
SEC - M1, MANESAR GURGAON

Tentative Saleable Area
1845 SQ.FT



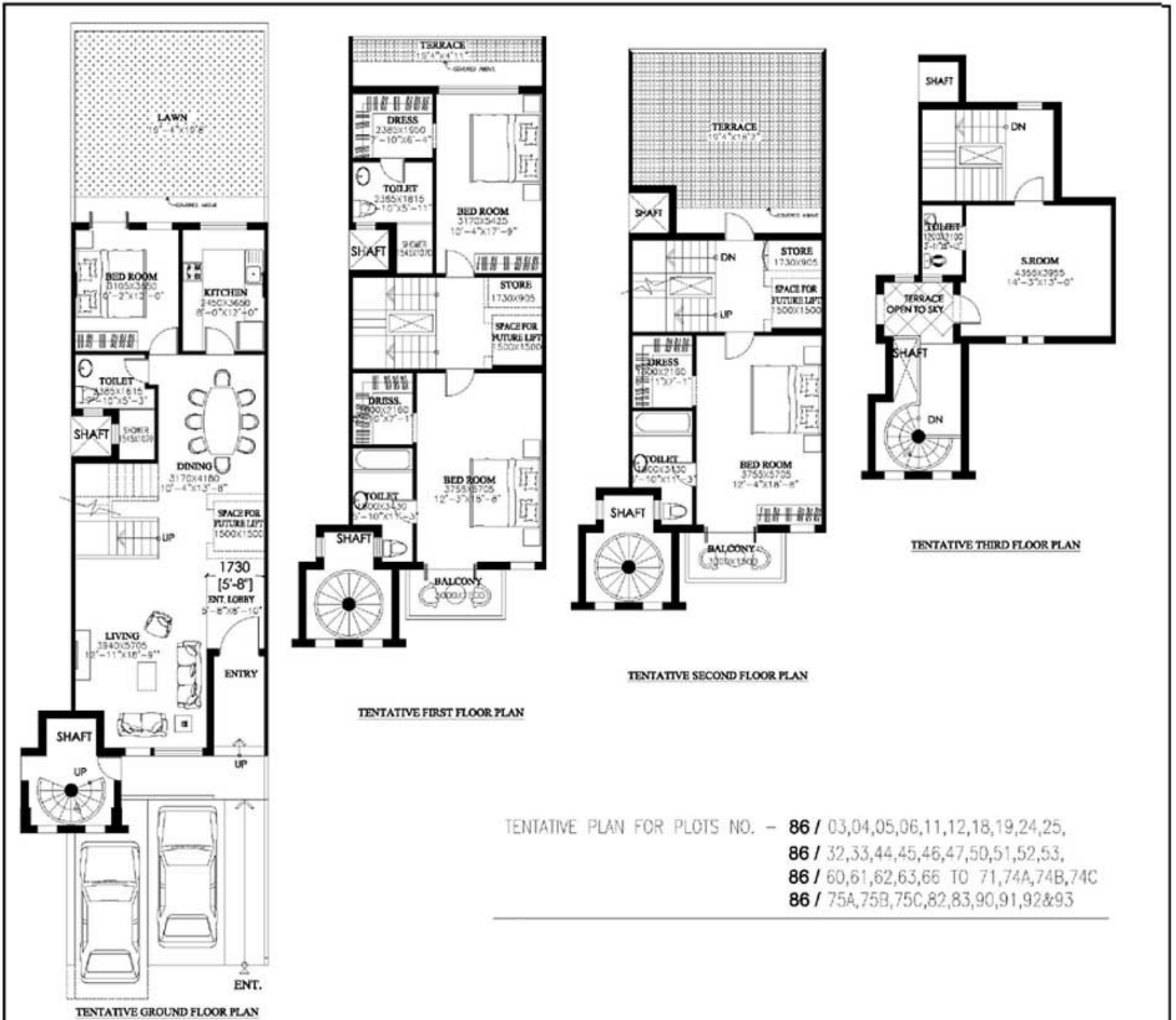
TENTATIVE PLAN OF APARTMENT NO. 3 & 4 IN BLOCK A, B, C & D

NOTE: PLAN NOT TO SCALE

 **DLF NEW GURGAON HOMES DEVELOPERS PVT.LTD**

Project
EXPRESS GREENS
SEC - M1, MANESAR GURGAON

Tentative Saleable Area
2230 SQ.FT



 **DLF NEW GURGAON HOMES DEVELOPERS PVT.LTD**

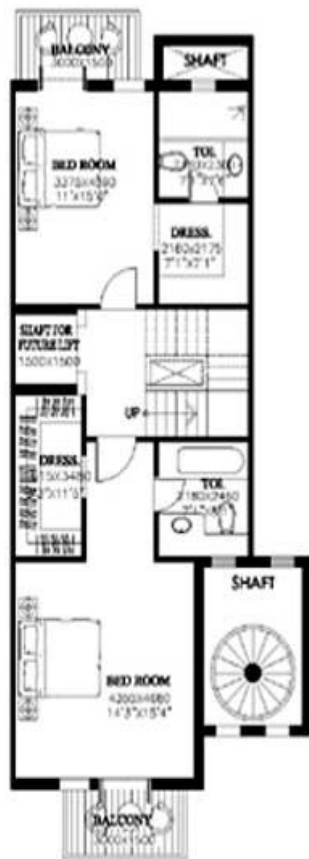
Project
NEW TOWN HEIGHTS - II
SECTOR - 86, GURGAON

Type
TOWN HOUSE

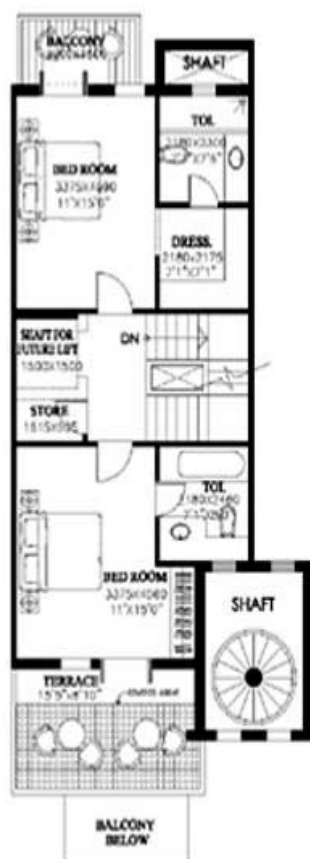
Tentative Saleable Area
3090 SFT.



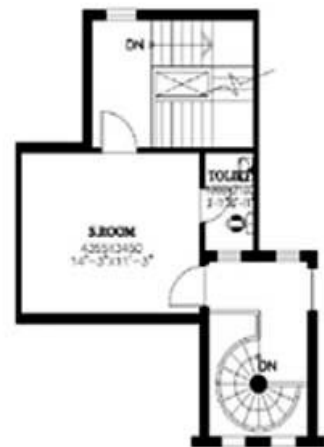
TENTATIVE GROUND FLOOR PLAN



TENTATIVE FIRST FLOOR PLAN



TENTATIVE SECOND FLOOR PLAN



TENTATIVE THIRD FLOOR PLAN

TENTATIVE PLAN FOR PLOTS NO. - 86 / 09,10,14,15,16,17,20,21,22,23,
86 / 26 TO 31, 34 TO 43, 48,49,
86 / 54,55,76 TO 81 & 84 TO 89



DLF NEW GURGAON HOMES DEVELOPERS PVT.LTD

Project

NEW TOWN HEIGHTS
SECTOR - 86, GURGAON

Type

TOWN HOUSE

Tentative Saleable Area

3220 SFT.

express greens

DLF NEW GURGAON

PRICES

Unit Sale Price (Rate)	As applicable
Cost of Parking	As applicable
Preferential Location Charges (PLC)	As applicable
Infrastructure Development Charges & External Development Charges (IDC + EDC)	Rs. 150/- p. s. ft.
Interest Bearing Maintenance Security (IBMS)	Rs. 50/- p. s.ft.
Down Payment Rebate	10%

DOWN PAYMENT PLAN

On Application for Booking	Rs. 5 lakhs (Rs. 10 lakhs in case of Town House & Ind. Floors)
Within 30 days of Booking	95% of Sale Price (Less : a) Booking Amount b) Down Payment Rebate
On Application of Occupation Certificate	2.5% of Sale Price
On Receipt of Occupation Certificate	2.5% of Sale Price + IBMS + Stamp Duty & Registration Charges

CONSTRUCTION LINKED - PAYMENT PLAN

On booking	Rs 5 lakhs (Rs 10 lakhs in case of Townhouses & Ind. Floors)
Within 2 months of booking	20% of the Sale Price (less booking amount)
Within 4 months "	7.5% "
Within 6 months "	7.5% "
Within 9 months" / On Commencement of Construction*	7.5% "
Within 12 months" / On Completion of foundation work*	7.5% "
Within 15 months" / On laying of 6 th floor slab*	7.5% "
Within 18 months" / On laying of 14 th floor slab*	7.5% "
Within 21 months" / On laying of 20 th floor slab*	10% "
Within 24 months" / On laying of Terrace slab*	10% "
Within 27 months" / On Application of Occupation Certificate*	10% "
On receipt of Occupation Certificat	5% " + IBMS + Stamp Duty & Registration Charges
(*Whichever is later)	
SALE PRICE OF UNIT	(UNIT PRICE x SUPER AREA OF INDEPENDENT FLOORS) + PREFERENTIAL LOCATION CHARGES + IDC + EDC + COST OF PARKING (as applicable)

Notes

1. Down Payment Rebate is payable on Sale Price Less Govt. Charges
2. The Basic unit price is escalation free, but subject to revision/withdrawal without notice at Company's sole discretion.
3. The rebate for early payment shall however be subject to change from time to time and is presently @ 11% per annum.
4. Each Apartment would be provided with power backup of 6-7 KVA in Type I & II and Town Houses & Independent Floors would be provided with power backup of 10 KVA.
5. One car parking along with Three Bedroom Apartment and Two car parking with Four Bedroom Apartment, Town Houses & Independent Floors is mandatory.
6. The yearly simple interest payable on IBMS shall be determined by the company as per the applicable rates on Fixed Deposits accepted by State Bank of India at the close of each financial year on 31st March.
7. Stamp duty & Registration charges shall be payable along with the last installment as applicable.
8. The Company would pay penalty to its customers @ Rs. 10 per sq.ft. per month for any delay in handing over the product beyond the committed period of three years from the date of execution of agreement. Similarly, the customer would be liable to pay holding charge @ Rs. 10/- per sq.ft. per month, if he fails to take possession within 30 days from the date of issue of occupation certificate.
9. Attractive Housing Loan options available from various financial institutions.
10. Prices are effective as on date.
11. Prices indicated above are subject to revision from time to time at the sole discretion of the company.
12. Prices, terms and conditions stated herein are merely indicative with a view to acquaint the applicant and are not exhaustive.

For detailed Terms and Conditions please refer to the Application Form and Buyer's Agreement.

Price List

DLF Express Greens, Gurgaon

Pricing for Apartments

Basic Sale Price:	<i>As Applicable</i>
EDC & IDC:	<i>Rs. 150 per sq.ft.</i>
PLC:	<i>Green Facing: Rs. 300 per sq.ft.</i>
	<i>Corner Unit: Rs. 400 per sq ft</i>
	<i>Green Facing and Corner Unit: Rs. 500 per sq.ft.</i>
Cost of Parking	
	<i>Open: Rs. 2.00 Lacs</i>
	<i>Covered Parking: Rs. 3.00 Lacs</i>
	<i>Back to Back (2 slots): Rs. 4.50 Lacs</i>

Note: - One car parking is mandatory with three bedroom and two car parkings are mandatory with four bedroom apartment.

Town Houses in Express Greens

- Exclusive dwelling with Garden and Terrace in the price **Rs 83 lacs to 1.08 crores**
- All the benefits of living in a condominium e.g. Full Power Back-up, Club Facility, Security System etc.
- All bedrooms with attached balcony

Independent Floors in Express Greens

- Well laid out design with no wastage of space
- In the price range of **Rs 81 lacs to 90 lacs.**
- Car parking and garden on stilt level
- All the benefits of living in a condominium eg. Full Power Back-Up, Club Facility, Security System etc.
- All Bedroom/Guest Rooms have attached balcony/sit out.

Pricing for Town Houses and Independent Floors:

Basic Sale Price:	<i>As Applicable</i>
--------------------------	----------------------

EDC & IDC:	Rs. 150 per sq.ft.
Parking (2 Slots)	Rs.5.00 Lacs
PLC	As applicable

Note: - Two car parking are mandatory

Booking Amount:	Rs. 5 Lacs (in favour of DLF Home Developers Ltd)
	Rs 10 Lacs for Town Houses and Independent floors (in favour of DLF Home Developers Ltd)

Site Plan of DLF : Express Greens, Gurgaon

